

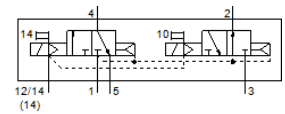
solenoid valve

VSVA-B-T32H-AZH-A1-1R5L

Part number: 534544

FESTO

with central plug, round design M12x1.



Data sheet

Feature	Value
Valve function	2x3/2 open/closed, monostable
Type of actuation	electrical
Width	26 mm
Operating pressure	3 ... 10 bar
Design structure	Piston slide
Type of reset	Air spring
Authorisation	C-Tick c CSA us (OL) c UL us - Recognized (OL)
CE mark (see declaration of conformity)	to EU directive for EMC
Protection class	IP65 NEMA 4
Nominal size	9 mm
Grid dimension	27 mm
Exhaust-air function	throttleable Via throttle plate Via individual sub-base
Sealing principle	soft
Assembly position	Any
Conforms to standard	ISO 15407-1
Manual override	Pushing
Type of piloting	Piloted
Pilot air supply	external
Flow direction	non reversible
Overlap	Positive overlap
Signal status display	LED
Pilot pressure	3 ... 8 bar
Flow rate of valve	1,250 l/min
Flow rate of valve on individual sub-base	1,000 l/min
Flow rate of pneumatically linked valve	900 l/min
Switching time off	33 ms
Switching time on	20 ms
Duty cycle	100 %
Max. positive test pulse with logic 0	500 µs
Max. negative test pulse with logic 1	500 µs
Nominal breakaway current per solenoid coil	110 mA up to 20 ms
Nominal current with current reduction	30 mA after 20 ms
Characteristic coil data	24 V DC: low-current phase 1 W, high-current phase 2.4 W
Permissible voltage fluctuation	+/- 10 %
Operating medium	Compressed air in accordance with ISO8573-1:2010 [7:4:4]
Note on operating and pilot medium	Lubricated operation possible (subsequently required for further operation)
Vibration resistance	Transport application test at severity level 2 in accordance with FN 942017-4 and EN 60068-2-6

Feature	Value
Shock resistance	Shock test with severity level 2 in accordance with FN 942017-5 and EN 60068-2-27
Corrosion resistance classification CRC	2 - Moderate corrosion stress
Medium temperature	-5 ... 50 °C
Relative air humidity	0 - 90 %
Pilot medium	Compressed air in accordance with ISO8573-1:2010 [7:4:4]
Ambient temperature	-5 ... 50 °C
Max. tightening torque, valve mounting	1.8 ... 2.2 Nm
Product weight	270 g
Electrical connection	3-pin M12x1 Central plug Round design
Mounting type	On sub-base With through-hole and screw
Auxiliary pilot air port 12/14	Connection plate size 26 mm, according to ISO 15407-1
Pilot exhaust port 82/84	Optional Not ducted as per standard Ducted
Materials note	Conforms to RoHS
Material seals	FPM HNBR NBR
Material housing	Aluminium die cast